

# X-Centric

## Major Pentatonic Modes

12 tones, each arranged as the first note of each mode  
Bergonzi Formula #1

©2013 bobbysternjazz.com

C: i. C maj. pentatonic

ii. Bb maj. pentatonic

iii.



Ab maj. pentatonic

iv.

F maj. pentatonic

v.

Eb maj. pentatonic



C#: i. C# maj. pentatonic

ii.

B maj. pentatonic

iii.



A maj. pentatonic

iv.

F# maj. pentatonic

v.

E maj. pentatonic



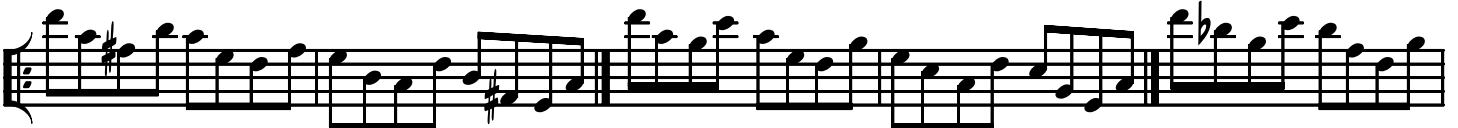
D: i.

D maj. pentatonic

ii.

C maj. pentatonic

iii.



Bb maj. pentatonic

iv.

G maj. pentatonic

v.

F maj. pentatonic



Eb: i. Eb maj. pentatonic

ii.

Db maj. pentatonic

iii.



B maj. pentatonic

iv.

Ab maj. pentatonic

v.

Gb maj. pentatonic



# X-Centric Major Pentatonic Modes

12 tones, each arranged as the first note of each mode - Bergonzi formula #1

©2013 bobbysternjazz.com

2

**E:** i. *E maj. pentatonic* ii. *D maj. pentatonic* iii.

Three musical staves showing the first three modes of the E major pentatonic scale. Each staff begins with a treble clef and a key signature of one sharp (F#). The first staff shows mode i (E major pentatonic), the second shows mode ii (D major pentatonic), and the third shows mode iii (C major pentatonic). Each mode is represented by a sequence of five notes in a pentatonic scale, with accidentals indicating the specific mode's notes.

*C maj. pentatonic* iv. *A maj. pentatonic* v. *G maj. pentatonic*

Three musical staves showing modes iv, v, and G major pentatonic. Mode iv is C major pentatonic, mode v is A major pentatonic, and the final staff shows G major pentatonic. Each staff begins with a treble clef and a key signature of one sharp (F#).

**F:** i. *F maj. pentatonic* ii. *E<sub>b</sub> maj. pentatonic* iii.

Three musical staves showing the first three modes of the F major pentatonic scale. Each staff begins with a treble clef and a key signature of two flats (Bb). The first staff shows mode i (F major pentatonic), the second shows mode ii (Eb major pentatonic), and the third shows mode iii (E major pentatonic).

*D<sub>b</sub> maj. pentatonic* iv. *B<sub>b</sub> maj. pentatonic* v. *A<sub>b</sub> maj. pentatonic*

Three musical staves showing modes iv, v, and Ab major pentatonic. Mode iv is Db major pentatonic, mode v is Bb major pentatonic, and the final staff shows Ab major pentatonic. Each staff begins with a treble clef and a key signature of two flats (Bb).

**F#:** i. *F# maj. pentatonic* ii. *E maj. pentatonic* iii.

Three musical staves showing the first three modes of the F# major pentatonic scale. Each staff begins with a treble clef and a key signature of two sharps (F# and C#). The first staff shows mode i (F# major pentatonic), the second shows mode ii (E major pentatonic), and the third shows mode iii (D major pentatonic).

*D maj. pentatonic* iv. *B maj. pentatonic* v. *A maj. pentatonic*

Three musical staves showing modes iv, v, and A major pentatonic. Mode iv is D major pentatonic, mode v is B major pentatonic, and the final staff shows A major pentatonic. Each staff begins with a treble clef and a key signature of two sharps (F# and C#).

**G:** i. *G maj. pentatonic* ii. *F maj. pentatonic* iii.

Three musical staves showing the first three modes of the G major pentatonic scale. Each staff begins with a treble clef and a key signature of one sharp (F#). The first staff shows mode i (G major pentatonic), the second shows mode ii (F major pentatonic), and the third shows mode iii (Eb major pentatonic).

*E<sub>b</sub> maj. pentatonic* iv. *C maj. pentatonic* v. *B<sub>b</sub> maj. pentatonic*

Three musical staves showing modes iv, v, and Bb major pentatonic. Mode iv is Eb major pentatonic, mode v is C major pentatonic, and the final staff shows Bb major pentatonic. Each staff begins with a treble clef and a key signature of one sharp (F#).

# X-Centric Major Pentatonic Modes

12 tones, each arranged as the first note of each mode  
Bergonzi formula #1

©2013 bobbysternjazz.com

**A<sup>b</sup>:** i. *Ab maj. pentatonic* ii. *Gb maj. pentatonic* iii.

*E maj. pentatonic* iv. *Db maj. pentatonic* v. *B maj. pentatonic*

**A:** i. *A maj. pentatonic* ii. *G maj. pentatonic* iii.

*F maj. pentatonic* iv. *D maj. pentatonic* v. *C maj. pentatonic*

**B<sup>b</sup>:** i. *Bb maj. pentatonic* ii. *Ab maj. pentatonic* iii.

*Gb maj. pentatonic* iv. *Eb maj. pentatonic* v. *Db maj. pentatonic*

**B:** i. *B maj. pentatonic* ii. *A maj. pentatonic* iii.

*G maj. pentatonic* iv. *E maj. pentatonic* v. *D maj. pentatonic*