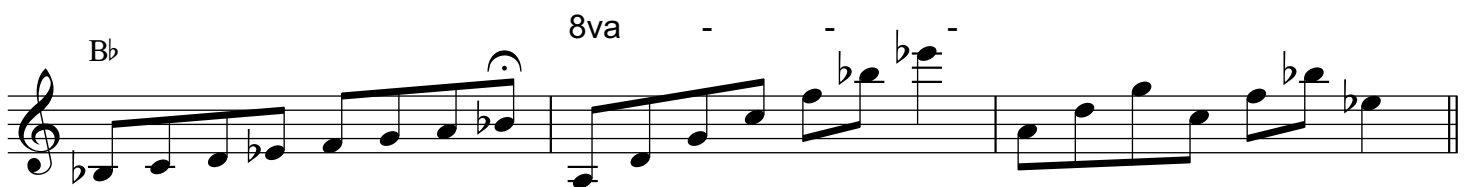
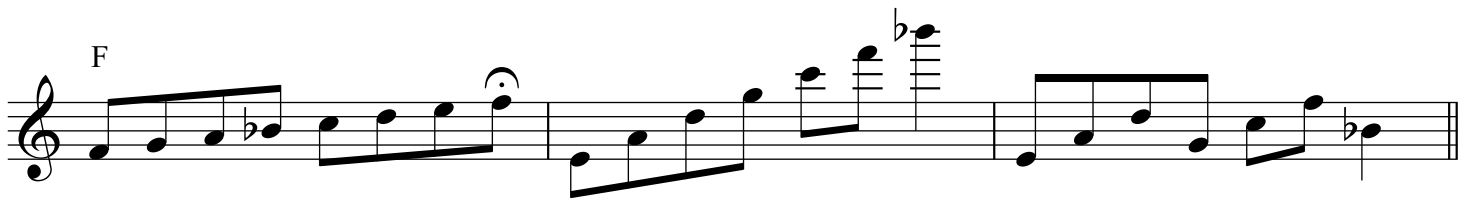
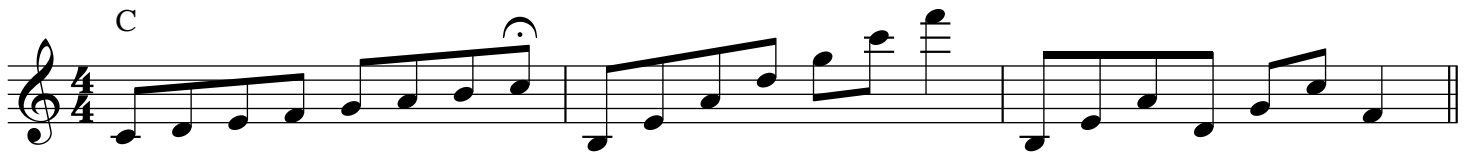


Major Scales Ascending In 4ths With Displaced 5ths

Bill Plake



F#

Musical staff for F# chord. The staff contains a melodic line starting with a half note F#4, followed by eighth notes G#4, A4, B4, C#5, D5, E5, and F#5. The melody then descends through G#4, A4, B4, C#5, D5, E5, and F#5, ending with a half note F#4. The key signature has one sharp (F#).

B

Musical staff for B chord. The staff contains a melodic line starting with a half note B3, followed by eighth notes C#4, D4, E4, F#4, G#4, A4, and B4. The melody then descends through C#4, D4, E4, F#4, G#4, A4, and B4, ending with a half note B3. The key signature has one sharp (F#).

E

Musical staff for E chord. The staff contains a melodic line starting with a half note E3, followed by eighth notes F#3, G#3, A4, B4, C#5, D5, and E5. The melody then descends through F#3, G#3, A4, B4, C#5, D5, and E5, ending with a half note E3. The key signature has one sharp (F#).

A 8va

Musical staff for A chord. The staff contains a melodic line starting with a half note A3, followed by eighth notes B3, C#4, D4, E4, F#4, G#4, and A4. The melody then descends through B3, C#4, D4, E4, F#4, G#4, and A4, ending with a half note A3. The key signature has one sharp (F#). The marking "8va" is placed above the staff, and the notes in the second measure are written on a ledger line below the staff.

D

Musical staff for D chord. The staff contains a melodic line starting with a half note D3, followed by eighth notes E3, F#3, G#3, A4, B4, C#5, and D5. The melody then descends through E3, F#3, G#3, A4, B4, C#5, and D5, ending with a half note D3. The key signature has one sharp (F#).

G

Musical staff for G chord. The staff contains a melodic line starting with a half note G2, followed by eighth notes A2, B2, C#3, D3, E3, F#3, and G3. The melody then descends through A2, B2, C#3, D3, E3, F#3, and G3, ending with a half note G2. The key signature has one sharp (F#).