

# X-Centric

## Major Pentatonic Modes

Bobby Stern  
©2013 bobbysternjazz.com

12 tones, each arranged as the first note of each mode

C: i. C maj. pentatonic ii. Bb maj. pentatonic iii.



Ab maj. pentatonic iv. F maj. pentatonic v. Eb maj. pentatonic



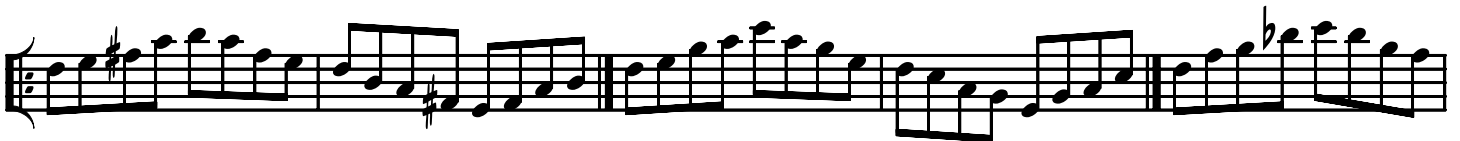
C#: i. C# maj. pentatonic ii. B maj. pentatonic iii.



A maj. pentatonic iv. F# maj. pentatonic v. E maj. pentatonic



D: i. D maj. pentatonic ii. C maj. pentatonic iii.



Bb maj. pentatonic iv. G maj. pentatonic v. F maj. pentatonic



Eb: i. Eb maj. pentatonic ii. Db maj. pentatonic iii.



B maj. pentatonic iv. Ab maj. pentatonic v. Gb maj. pentatonic



# X-Centric Major Pentatonic Modes

12 tones, each arranged as the first note of each mode

Bobby Stern

©2013 bobbysternjazz.com

2

E: i. *E maj. pentatonic* ii. *D maj. pentatonic* iii.



*C maj. pentatonic* iv. *A maj. pentatonic* v. *G maj. pentatonic*




F: i. *F maj. pentatonic* ii. *E $\flat$  maj. pentatonic* iii.




*D $\flat$  maj. pentatonic* iv. *B $\flat$  maj. pentatonic* v. *A $\flat$  maj. pentatonic*



F#: i. *F# maj. pentatonic* ii. *E maj. pentatonic* iii.



*D maj. pentatonic* iv. *B maj. pentatonic* v. *A maj. pentatonic*



G: i. *G maj. pentatonic* ii. *F maj. pentatonic* iii.



*E $\flat$  maj. pentatonic* iv. *C maj. pentatonic* v. *B $\flat$  maj. pentatonic*




# X-Centric Major Pentatonic Modes

12 tones, each arranged as the first note of each mode

Bobby Stern  
©2013 bobbysternjazz.com

**A<sup>b</sup>:** i. *Ab maj. pentatonic* ii. *Gb maj. pentatonic* iii.




This block contains the first two staves of music. The first staff shows the *Ab maj. pentatonic* mode (i) and the *Gb maj. pentatonic* mode (ii) in A-flat major. The second staff shows the *Ab maj. pentatonic* mode (iii) and the *Gb maj. pentatonic* mode (iv).

*E maj. pentatonic* iv. *Db maj. pentatonic* v. *B maj. pentatonic*




This block contains the third staff of music, showing the *E maj. pentatonic* mode (iv), the *Db maj. pentatonic* mode (v), and the *B maj. pentatonic* mode (vi).

**A:** i. *A maj. pentatonic* ii. *G maj. pentatonic* iii.




This block contains the fourth staff of music. The first staff shows the *A maj. pentatonic* mode (i) and the *G maj. pentatonic* mode (ii) in A major. The second staff shows the *A maj. pentatonic* mode (iii) and the *G maj. pentatonic* mode (iv).

*F maj. pentatonic* iv. *D maj. pentatonic* v. *C maj. pentatonic*




This block contains the fifth staff of music, showing the *F maj. pentatonic* mode (iv), the *D maj. pentatonic* mode (v), and the *C maj. pentatonic* mode (vi).

**B<sup>b</sup>:** i. *Bb maj. pentatonic* ii. *Ab maj. pentatonic* iii.



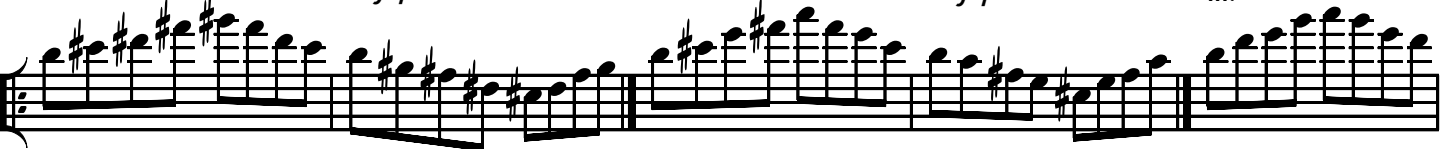
This block contains the sixth staff of music. The first staff shows the *Bb maj. pentatonic* mode (i) and the *Ab maj. pentatonic* mode (ii) in B-flat major. The second staff shows the *Bb maj. pentatonic* mode (iii) and the *Ab maj. pentatonic* mode (iv).

*Gb maj. pentatonic* iv. *Eb maj. pentatonic* v. *Db maj. pentatonic*



This block contains the seventh staff of music, showing the *Gb maj. pentatonic* mode (iv), the *Eb maj. pentatonic* mode (v), and the *Db maj. pentatonic* mode (vi).

**B:** i. *B maj. pentatonic* ii. *A maj. pentatonic* iii.



This block contains the eighth staff of music. The first staff shows the *B maj. pentatonic* mode (i) and the *A maj. pentatonic* mode (ii) in B major. The second staff shows the *B maj. pentatonic* mode (iii) and the *A maj. pentatonic* mode (iv).

*G maj. pentatonic* iv. *E maj. pentatonic* v. *D maj. pentatonic*



This block contains the ninth staff of music, showing the *G maj. pentatonic* mode (iv), the *E maj. pentatonic* mode (v), and the *D maj. pentatonic* mode (vi).